

Take your sewing lines from chaos to control



The global apparel industry is shifting paradigms faster than ever, trying to adapt to the ever-changing needs of the buyer. Global apparel producers are reinventing the wheel looking at new ways to meet these demands while reducing their carbon footprint and being cost-effective.

Respond to evolving buyer trends with a digitally transformed and agile line-balancing process.

Drive efficiency on your production floor with KingslakeBlue Line Balancing, we offer you much more than just line balancing!

Digitalize the line-balancing process with AI-driven functions and help your IE teams gain maximized productivity.

Many benefits, one solution to maximize your ROI



Upto 20% increase in factory efficiency



Upto 15% increase in operator productivity



Upto 20% saving in management time



Upto 40% time saving for Work study officer

Benefits of the solution



Boost line utilization



Eliminate bottlenecks



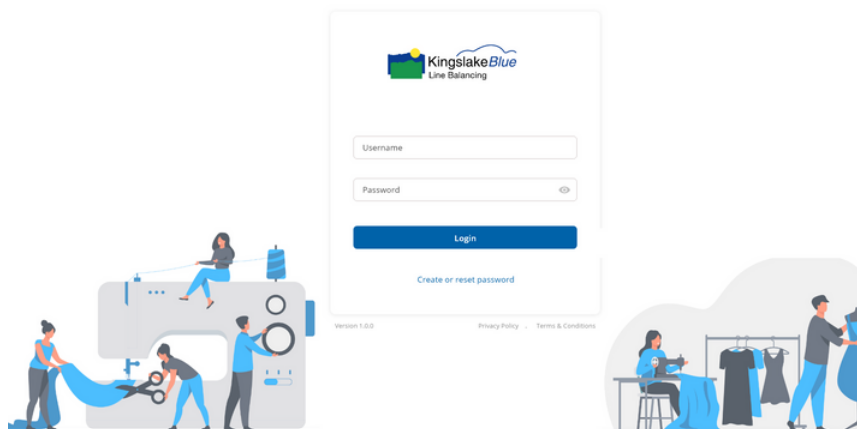
Identify training gaps



Reallocation for absentee operators

Connect anytime, anywhere

Intuitive browser-based and mobile interfaces, log in through any connected device, anywhere.



Automated line suggestions

Got a style to produce? The in-built AI tool suggests the best line to use for production, based on the layout and historical skills data.



Plan training prior to production

Identifying any low efficiencies and planning training prior to the start of production, resulting in increasing expected efficiencies.



Identify bottlenecks

Identify any bottlenecks in the production line early on, so that solutions can be planned earlier to reduce any inefficiencies.



More accurate planning

Capacity and learning curves can be planned more accurately and efficiently based on historical data.

Optimal capacity balancing

Resolve critical bottlenecks like low line efficiencies, operator reallocation and much more instantly using AI-driven capacity balancing.



Instant line balancing

Accurate and fast line balancing within minutes rather than hours. A detailed operation breakdown report for easy allocation



Time study mobile app

Identify any bottlenecks in the production line early on, so that solutions can be planned earlier to reduce any inefficiencies.



More accurate planning

Capacity and learning curves can be planned more accurately and efficiently based on historical data.

Absentee balancing

Absentees, no problem. A pool of best employee suggestions will be given for reallocation, in place of the absentee operator. Keep your production lines at maximum efficiency without any delays.



Easy identification

Get line-wise operator absentee details right after attendance uploads to plan for operator replacements.



Quick absentee reallocations

Easily replace absentee operators and avoid efficiency drops. A pool of best employee suggestions will be generated, enabling you to select the ideal replacement for the absentee operator.

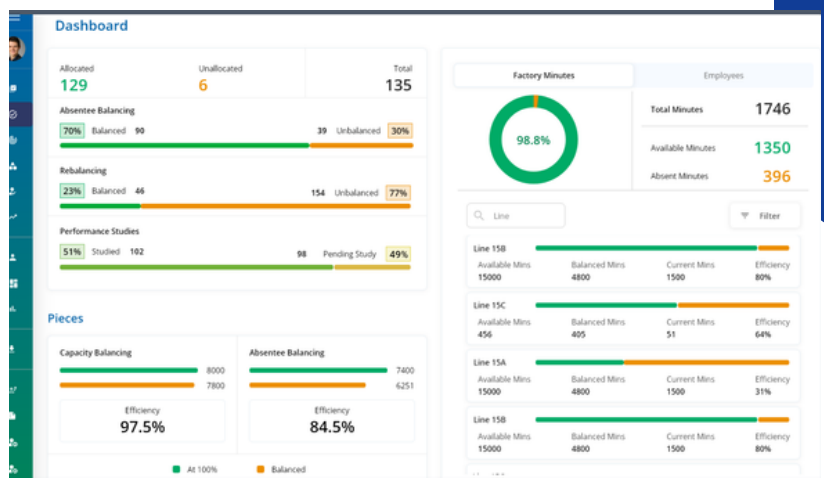


Time-saving

Capacity and learning curves can be planned more accurately and efficiently based on historical data.

See your production floor like never before!

Improve your factory's performance with data-driven insights from present and historical data. Track, evaluate and monitor key performance indicators to get the most out of your factory.





Want to find out more?

**Reach out to our expert on
Nilantha : +94 773794265**